

# “JENNA” for Sale

## Moody 44 1992 (commissioned 1994)



Jenna was built in 1992 and commissioned by Moody Yachts in 1994, having cured for 2 years, resulting in a very watertight hull. She has been lovingly looked after, in excellent condition due to careful and diligent maintenance with light use.

Cutter rig with in-mast furling main, furlex Genoa & Gib, and Perkins 50, regularly serviced. Lovely teak decks and comprehensive domestic equipment with many recent investments:

- Standing Rigging & Liferaft (2024)
- 4 large Domestic Batteries (2025)
- Genoa & Sprayhood (refurb 2026)
- Brand new inner Gibsail, Heater, Radar and Navplotter, all fitted 2026.

### Location / Contact

- Lying at Kerrera Marina, Oban, Scotland, where she has been wintered ashore inside shed for past 2 years. Great sailing experiences, including UK circumnavigation; however, family commitments now limit the sailing opportunities, so it's time for a new crew to enjoy her.
- Owner: Archie Neill - [archie.neill61@gmail.com](mailto:archie.neill61@gmail.com), +44(0)7776 236328

### Dimensions

LOA: 43 ft 8 in  
Min. Draft: 5 ft

LWL: 36 ft 7 in  
Ballast: 4000 kg

Beam: 13 ft 6 in  
Displacement: 10500 kg

### Engine Installation / Electrics

- Perkins Prima 50hp
- Comprehensive engine and installation checks/repairs (2008 and 2017)
- Serviced annually - including fuel, filters, fan belt, impeller, top-up, diesel treated etc.
- Cam belt changed 1260hrs and 2200hrs
- Engine mounts replaced 2014
- Oil sump pump
- Folding 3-blade prop – Volvo
- Rope stripper fitted to prop
- 12v electrics plus 240v ring main
- Shore supply
- Sterling Pro Digital battery charger
- Adverc management system - DCM Mark 3
- Domestic batteries - four 125 Ah batteries (2025)
- Engine battery - Tayna 12V 50Ah (2020)
- Sealey 300W Pure Sine Wave Power inverter 12V DC - 230V 50 Hz (2024)
- Many spares - engine service and for domestic equipment

## Deck / Rigging

- Teak decks fitted by Moody (1998) and Semco treated
- Standing rigging replaced 2024
- Selden in-mast mainsail reefing
- Lewmar 50 cst primary winches
- Roller reef genoa (150%) with Furlex (new 2014), and new sheets 2025
- Roller reef Gib with Furlex (new 2024)
- Tigress 1200w power windlass
- Selden boom vang
- Preventative Gelshield epoxy system applied to hull (2016)
- Emergency tiller
- Anchor chain - 70m x 10mm calibrated plus 20m spare 10mm chain
- Sail controls all led aft, halyards at mast
- Transom boarding ladder
- Emergency boarding ladder
- Boarding gates in guardwires
- Hot & cold deck shower
- Cockpit table

## Sails / Covers

- Lucas & Hyde mainsail (2008)
- Lucas & Hyde No. 1 genoa (2008, refurbished 2025)
- Cutter gib (2026)
- Cruising chute - rarely used, as new
- Sprayhood (2013, refurbished 2025)
- Cockpit tent with windows and zips/Velcro (2013)
- Sun awning - over beam and to stern
- Dodgers with name (2022, refurb 2026)

## Navigation / Equipment

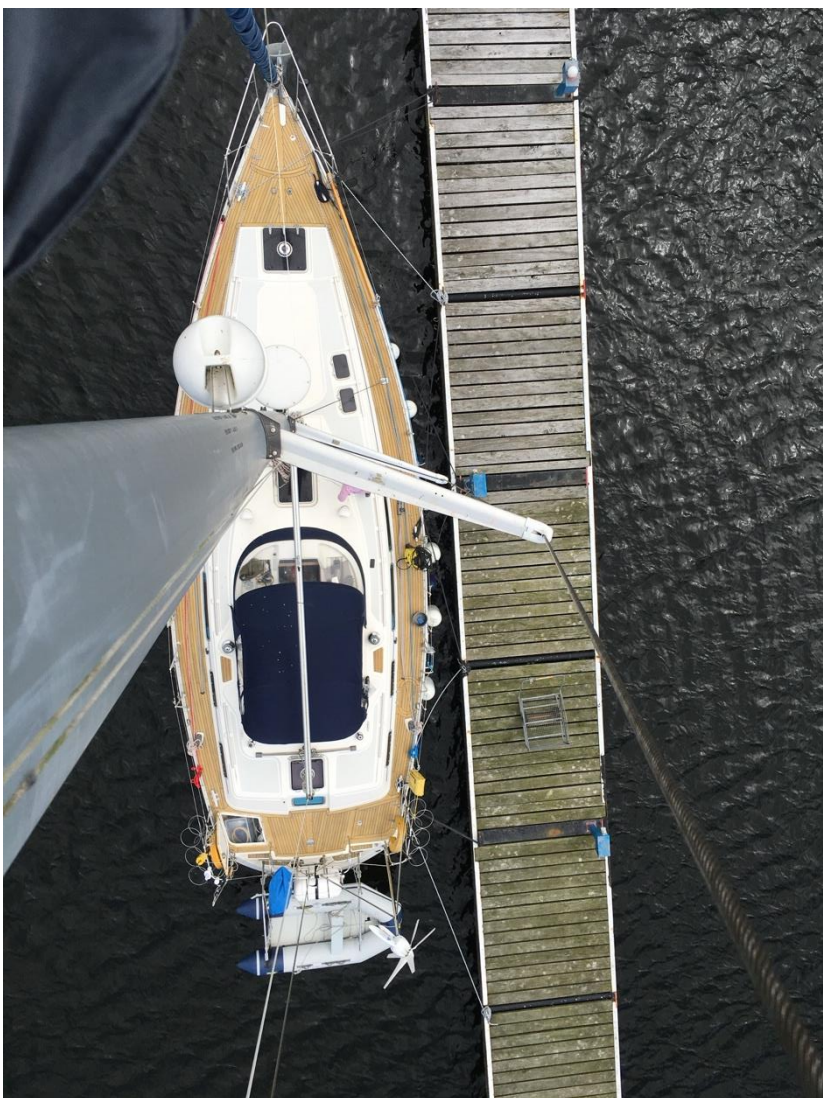
- Raymarine AIS700 Class B AIS Transceiver (2019)
- **Raymarine** colour chartplotter (2026)
- Raymarine log/speed (2015)
- Raymarine echo-sounder (2024)
- Raymarine wind (2015)
- Raymarine DSC VHF radio (2015)
- Raymarine Digital Radar (2015)
- Radar reflector
- Navtex (2015)
- Autopilot (Autohelm)
- Steering compass
- Navigation lights

## Accommodation / Interior Equipment

- 8 berths
- Plastimo oven with burner and grill
- Keel cooled fridge & freezer (2008)
- 100 gallon freshwater tank
- Hotwater supply
- Jabsco toilet x 2 (2008)
- Holding tank with macerator
- 12V TV
- Sony radio with speakers, internal & external (2021)
- Brass oil lamp
- Mirrors (bevilled)
- New upholstery (2021)
- Cockpit cushions - full set (inc gin seat)
- Gas - Calor LPG EU adaptor
- Microwave - 240V
- Sea mater footpump
- Diesel heater (new 2026)
- LED cabin lighting
- Windows and portlights replaced 2017
- Cooking pots, cutlery, crockery

## Safety / Warps / Ground-tackle

- Manson 25kg bow anchor with 70m/10mm chain
- 2 x anchor snubbers
- Comprehensive set of mooring warps
- 6 larger fenders and baskets
- 4 medium fenders
- 1 ball fender
- Bow fender
- Fender step
- Foghorn
- Jackstays
- Davits for dinghy
- 4 fire extinguishers (2008)
- Fire blanket
- Danbuoy
- Automatic bilge pump - 1000 gph
- Liferaft (2024)
- CQR spare anchor
- 2 x bosun chair
- MOB sling, lifebuoy x 2 with lights
- Gas shut-off solenoid switch at chart table
- Boat hooks, mooring hook, display cones, deck brushes

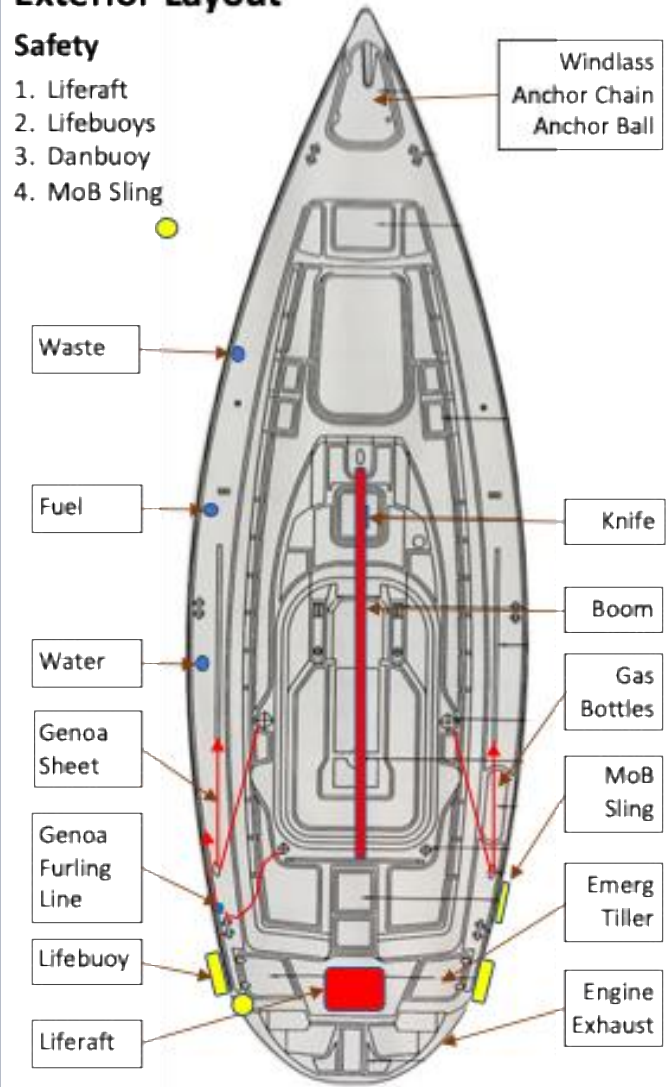




## Exterior Layout

### Safety

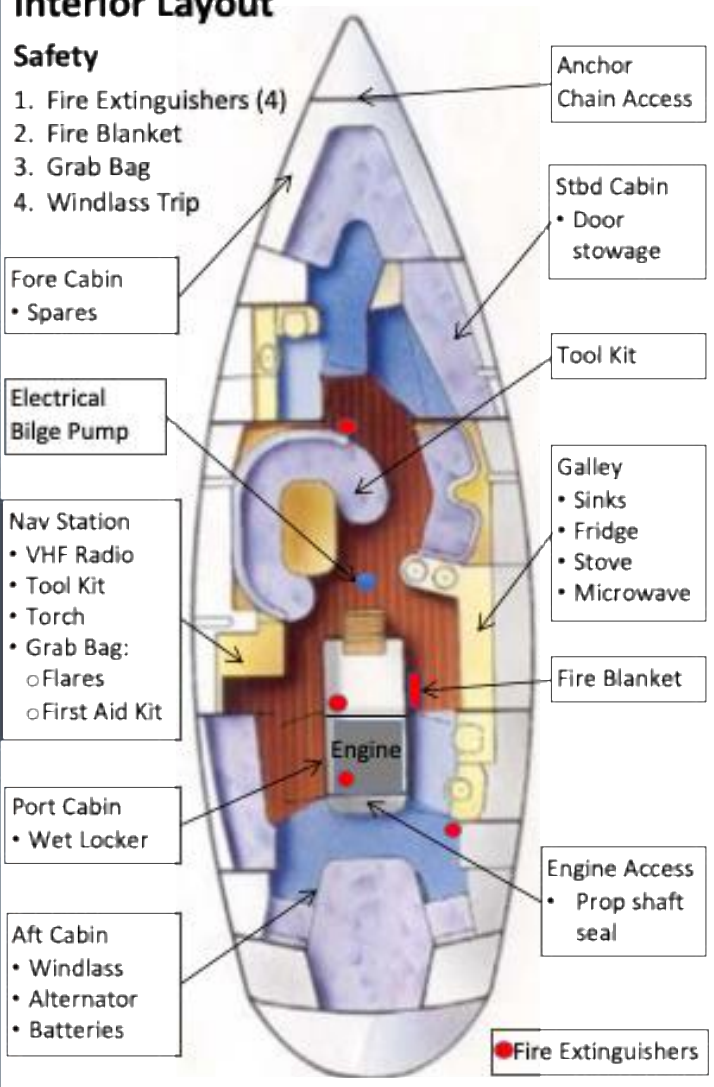
1. Liferaft
2. Lifebuoys
3. Danbuoy
4. MoB Sling



## Interior Layout

### Safety

1. Fire Extinguishers (4)
2. Fire Blanket
3. Grab Bag
4. Windlass Trip



● Fire Extinguishers









