

Moody 346 – MOJO

Overview.

This Moody 346, built in 1990 and among the last of its model, is equipped for cruising with an emphasis on safety. The vessel has undergone regular updates and improvements while retaining its original finish and fittings. It includes new sails, single line reefing, a self-pitching propeller, and a complete set of instruments, making it ready for use.

Build Summary

- Make: Moody 346
- Year: 1990
- Class : Sailing Cruiser
- LOA: 10.5m
- Hull : GRP with Bilge Keels.
- Engine: 4-Cylinder Diesel Engine
- Drive: Shaft Drive , Propeller & RopeCutters
- Layout: Centre Cockpit
- Berths: 6
- Cabins: 2
- Aft Cabin: 1

Build:

- Moody346 built 1990
- Designed by Bill Dixon and built by Marine Projects Plymouth, commissioned and marketed by A H Moody.
- LOA: 10.5m
- LWL 8.5m
- Beam: 3.56

- Draught: 1.41m
- Displacement: (bilge keel,) dry 5.2 tonnes.

Accommodation

- Sleeps 6 in two cabins plus saloon
- V berth forwards with infill, wardrobe and storage beneath berth.
- Centre cockpit layout allows for large aft double cabin, with double berth, storage lockers, settee, and vanity unit.
- Saloon sleeps two in single berths.
- Head compartment with Jabsco marine toilet, hand basin and shower.
- Saloon comprises of chart table on port-side.
- Port-side bottle store.
- Storage in saloon table.
- Galley comprising of two burner gimbaled gas cooker with oven and grill. New 2016
- 12v fridge.
- Stainless steel double sink.
- Range of storage lockers, drawers, and worktops.
- Teak joinery throughout.
- Teak and holly cabin soles.
- Blue upholstery throughout.
- Grey carpet in sleeping cabins.
- Blue check curtains and matching scatter cushions.
- Eberspacher warm air cabin heating.
- LED lighting throughout below decks

Moody 346 – MOJO

Machinery

- Thorneycroft T80 35hp Diesel Engine
- Serviced each winter
- New Anodes as required
- New Raw water impeller each season
- Stainless waterlock – 2012
- Cruising speed 6 knots
- Max speed 8 knots
- Brunton Autoprop Self pitching propeller with new Brunton Anode each season
- Tides Rope Cutter installed
- Comprehensive engine instrument panel
- Engine Hours run meter
- Exhaust temperature alarm

Electrics

- 4 x 12 volt 110 ah batteries (2 in engine room + 2 in box under companionway)
- Arranged as 2 x house banks each with separate isolator
- Engine start battery with separate isolator
- 70 amp alternator with serpentine belt drive with smart regulator
- 140w solar panel (mounted on S/S frame aft deck) and MTTP controller
- 35amp mains battery charger

Tankage.

- Steel fuel tank (cleaned and new primary filter installed 2019) 160 litres
- 2 x Teck Tanks, approx 150 litres

Water system

- Hot and cold pressurised water system
- Hot water heated by engine or by shore power
- Safety mixer valve incorporated to regulate water temperature
- New water pump fitted 2023

Navigation aids

- Plastimo Steering Compass
- Raymarine C120 MFD (GPS, Plotter, AIS at Helm)
- Raymarine ST60+ Log, Speed, Depth and Wind instruments at console over companionway
- Raymarine ST6002 Autopilot with Remote control, with Linear Actuator direct to Rudder
- Raydome 2kw radar (this is NOT currently working)
- Raystar 125 GPS
- Standard Horizon VHF Radio with GPS and AIS built in
- Standard Horizon Command Mike in Cockpit

Ground Tackle

- Delta 16kg Anchor with 50m Galvanised chain
- Lewmar electric Anchor Windlass with remote control

Moody 346 – MOJO

General Equipment

- Low level navigation lights
- Masthead Nav Lights
- Masthead Anchor light
- Sprayhood
- Full cockpit tent
- Cockpit Cushions
- Chamois Leather covered Steering Wheel
- Binnacle Cover
- Cockpit Table and drinks holder
- 2 x Calor 4.5kg Gas bottles
- Stainless Steel Boarding / Bathing ladder
- Radio / CD player
- Huge Cockpit locker with portside engine access
- Fenders
- Assorted Mooring lines
- Engine Spares (alternator, belts, impeller etc)
- Tool Kit

Sails

- 2018 New sails by Sailtech of Penryn.
- Fully battened main in Vectran material
- 120% Furling genoa in Vectran material.
- Lazy Jacks and Stack pack 2010
- Storm Sail (never used !)

Safety Equipment

- Seago 6-person life raft (Serviced 2023)
- Horseshoe lifebuoy
- Fire extinguishers in each cabin
- Fire blanket in saloon (adjacent to cooker)
- Jackstays

Rig

- Bermudan Sloop Rig.
- Kemp Aluminium Deck Stepped Mast with Spreader
- Seldon 135 Single Line reefing Boom 2011
- Seldon Type 10 Vang with HD Spring 2011
- Control lines brought back to the Cockpit 2011
- Stainless Steel Standing Rigging 2008
- Harken Mk4 Furler 2008
- Spinnaker pole (also used with winter cover)

Winches

- 2 x Lewmar Twin Speed Self tailing Genoa Sheet Winches
- 2 x Lewmar Halyard winches on Mast
- 2 x Anderson Self Tailing Winches (1 for Furling line, 1 for Cockpit Roof Lines)

Moody 346 – MOJO



Moody 346 – MOJO



Moody 346 – MOJO



Moody 346 – MOJO



Moody 346 – MOJO



Moody 346 – MOJO



Moody 346 – MOJO



Moody 346 – MOJO



Moody 346 – MOJO



Moody 346 – MOJO



Moody 346 – MOJO



Moody 346 – MOJO



Moody 346 – MOJO



Moody 346 – MOJO



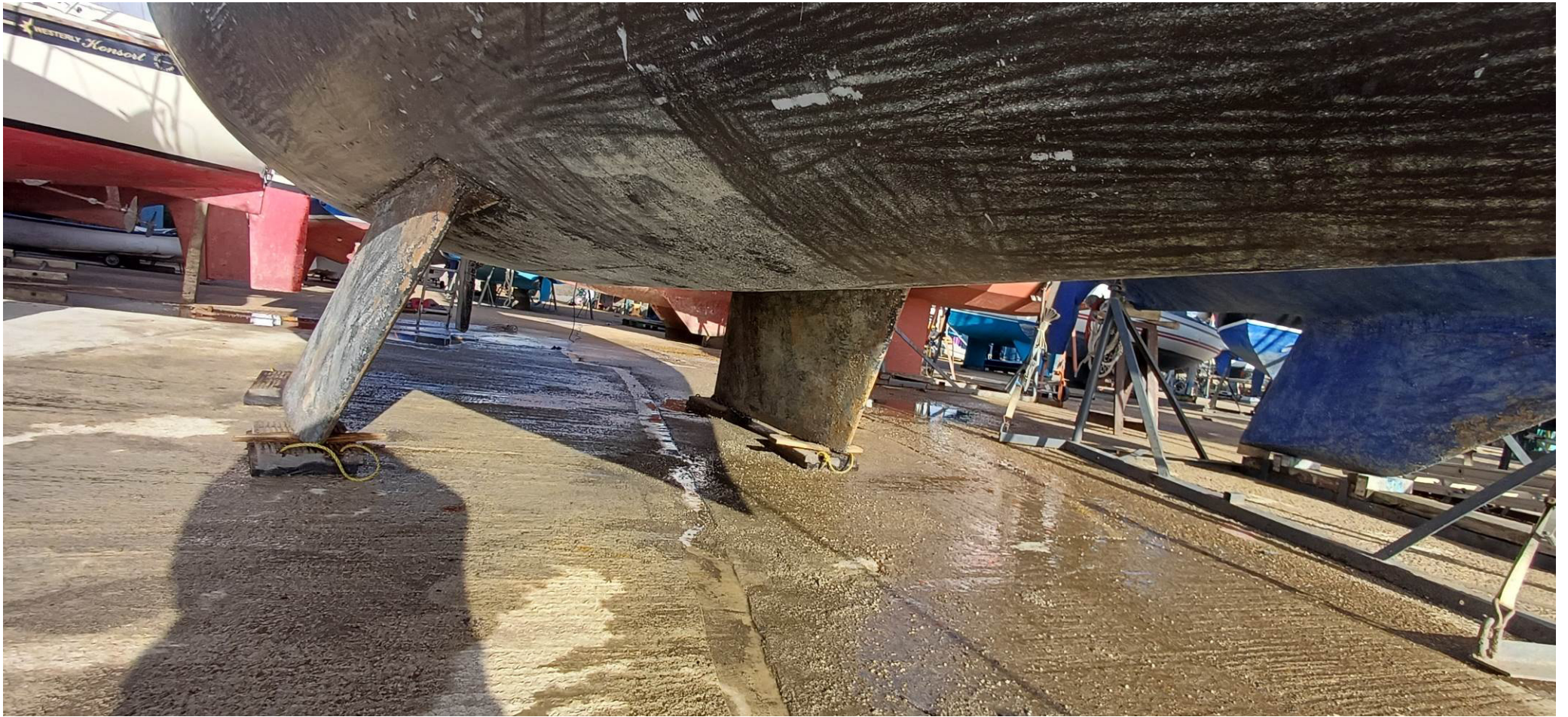
Moody 346 – MOJO



Moody 346 – MOJO



Moody 346 – MOJO



Moody 346 – MOJO



Moody 346 – MOJO



Moody 346 – MOJO



Moody 346 – MOJO



Moody 346 – MOJO



Moody 346 – MOJO



Moody 346 – MOJO



Moody 346 – MOJO



Moody 346 – MOJO



Moody 346 – MOJO



Moody 346 – MOJO



Moody 346 – MOJO



Moody 346 – MOJO



Moody 346 – MOJO



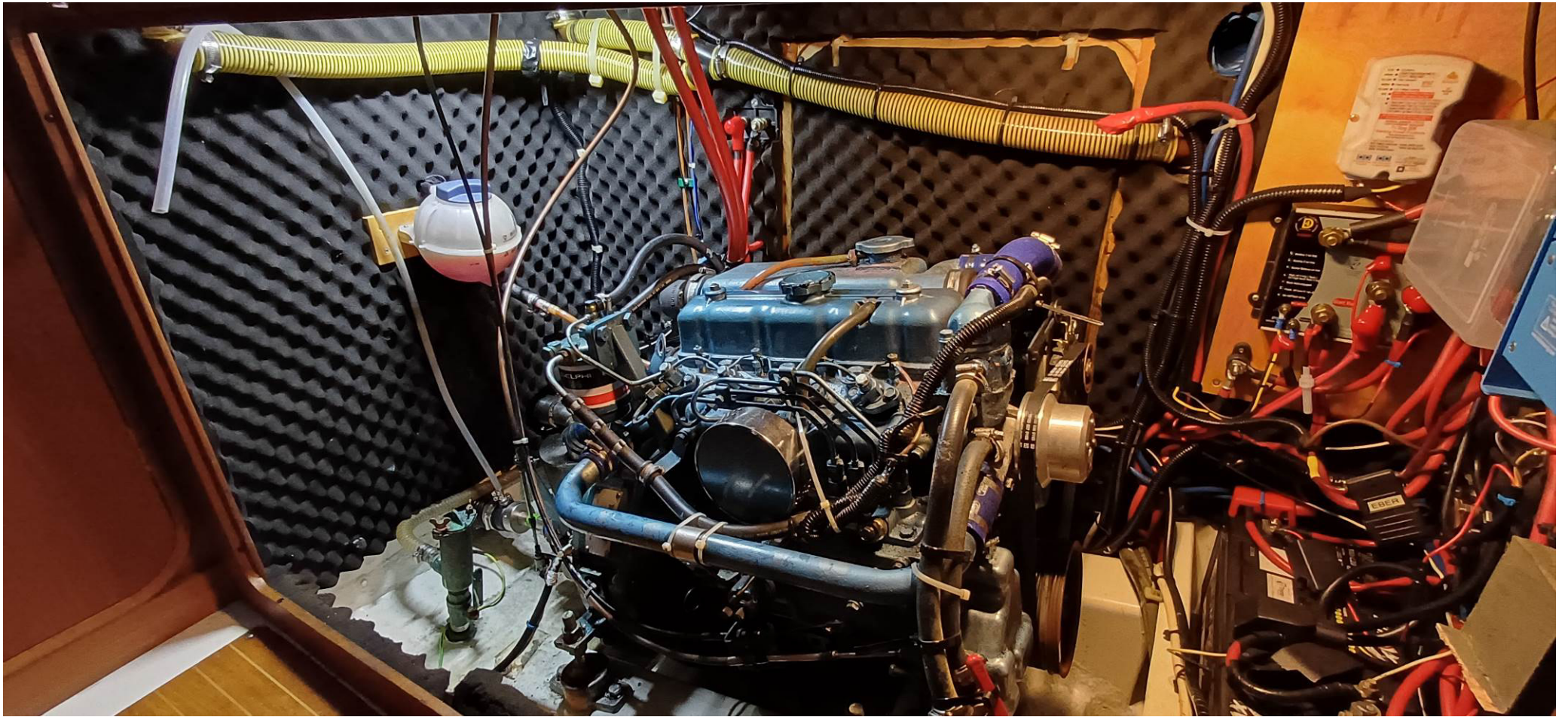
Moody 346 – MOJO



Moody 346 – MOJO



Moody 346 – MOJO



Moody 346 – MOJO



Moody 346 – MOJO

