

**Lille Bee (£?,000 sterling UK)**

**Moody 422 1988 (Lying ashore Aegina Greece)**





## **Lille Bee showing stainless steel frame for solar panels**





## Table of contents

### Page

1. Photo At anchor Greece
2. Photo Under sail Turkey
3. Photo At anchor Karacaoren Turkey
4. Photo **Heading to Aegina** and Under full sail outside Cephalonia Greece
5. **Table of contents**
6. **Principal dimensions** Moody 422
7. **Lille Bee history**
8. **Layout Diagrams** Accommodation and equipment (electrics and water)
9. **Fore cabin** V-berth and With en-suite heads
10. **Saloon** Photo dining table
11. Saloon Photo Single berth
12. Saloon Photo library
13. **Galley** Photo fridge
14. Cooker
15. **Navigation**
16. **Passage** Bunk berths
17. **Aft cabin** Double berth
18. Aft cabin En-suite heads
19. Aft cabin En-suite shower
20. **Engine room**
21. Easy access raw water impeller
22. Easy access diesel priming pump
23. **Electrics**
24. **Spars and rigging**
25. Furling genoa
26. Hoisting the main sail
27. **Sails**
28. Main sail
29. Cruising chute
30. Spinnaker
31. **The Hull**
32. Polished hull
33. Keel
34. New propeller
35. **Deck equipment**
36. Sun awning
37. **Aft deck**
38. **Cockpit**
39. **New cockpit seats and sole**
40. **Safety equipment**
41. Wind scoops
42. Top sides GRP thickness

# Lille Bee

## Moody 422 1988

Built by Marine Project of Plymouth UK to a Bill Dixon design in February 1988

### Registration

- |                    |            |
|--------------------|------------|
| 1. Official number | 85724      |
| 2. Yard Number     | D4062      |
| 3. UK Registration | SSR 100300 |

### Principal dimensions

- |                           |               |                                |
|---------------------------|---------------|--------------------------------|
| 1. Length overall         | 42.0 feet     | 12.80 metres                   |
| 2. Hull length            | 40.75 feet    | 12.42 metres                   |
| 3. Waterline length       | 34.25 feet    | 10.44 metres                   |
| 4. Beam                   | 13.34 feet    | 4.07 metres                    |
| 5. Draft                  | 5.0 feet      | 1.52 metres (Scheel keel)      |
| 6. Berths                 | 8             | 2 doubles and 4 singles        |
| 7. Engine                 | Yanmar 4JH 57 | 56 HP (New May 2023, ? hours ) |
| 8. Fuel capacity          | 60 gallons    | 273 litres                     |
| 9. Water capacity         | 90 gallons    | 409 litres                     |
| 10. Holding tank capacity | 200 litres    | in two tanks                   |
| 11. Displacement          | 2100 lbs      | 9528 kg                        |
| 12. Ballast               | 8400 lbs      | 3811 kg                        |

## "Lille Bee" history.

The original purchaser of Lille Bee took ownership in Denmark in 1988 (Denmark was not in the EU at the time), spending the next few years sailing around the Baltic.

On bringing her to Germany in 1993, the owner acquired all the necessary EU import VAT paid documentation needed for German registration. (Copies available). She then sailed all over the North Sea, doing a circumnavigation of the British Isles.

Lille Bee was bought by a British and Belgian couple in September 2000 who sailed her back to the UK where she spent 18 months in a local ship yard being refitted ready for life in the Mediterranean. She was sailed out to the Ionian islands in western Greece in 2002 and enjoyed as a holiday home, for the next eight years.

In 2010, Lille Bee sailed from the Ionian Islands east through the Corinth Canal to Fethiye in Turkey to become a full time live aboard working boat as "flotilla lead-boat". This was one of the main reasons why she was chosen; a strongly built 42 foot, centre cockpit Moody (lots of room below, fast, strong and able to look after her crew in any weather).

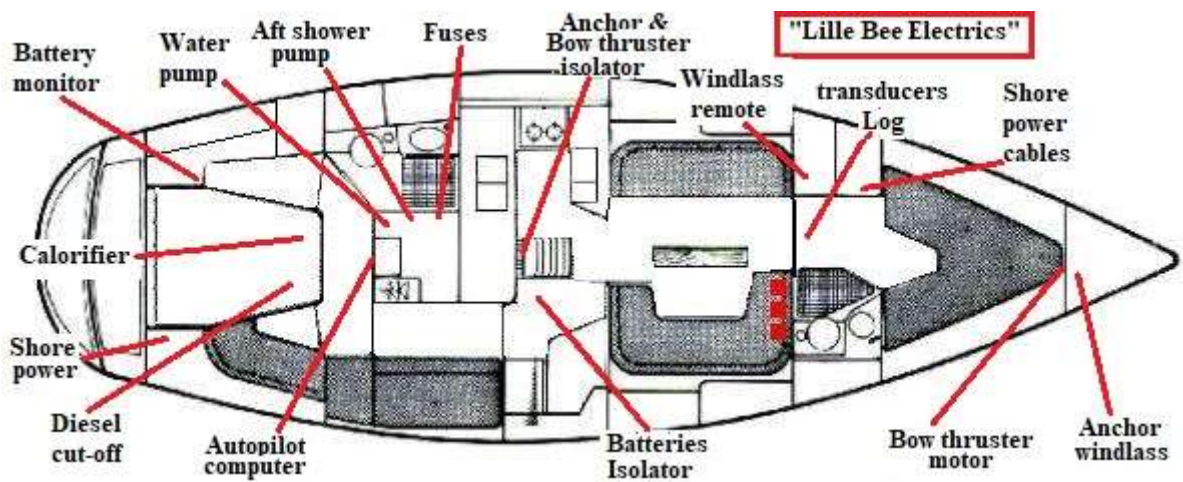
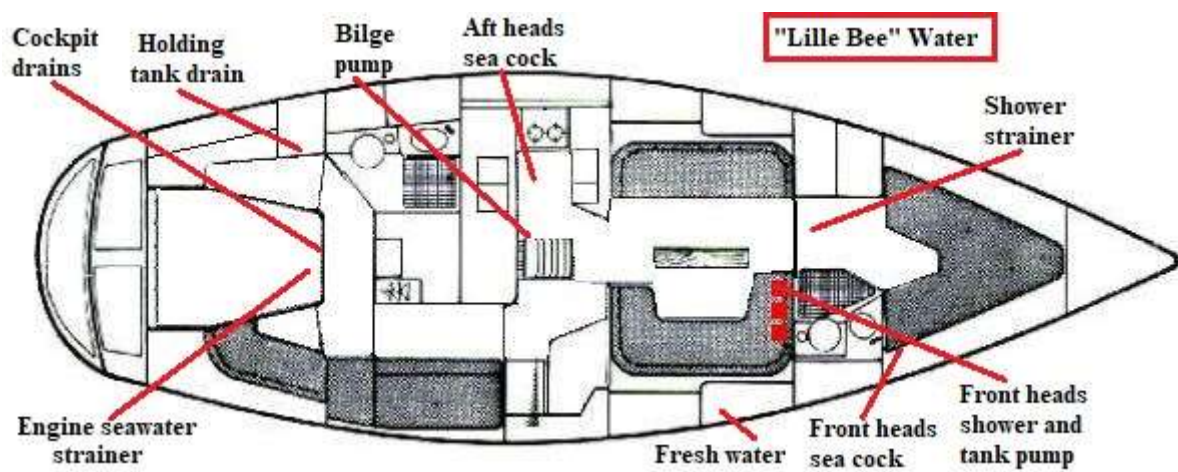
Lille Bee spent six seasons working in Turkey. At the end of each year, she hauled out into a local ship yard and underwent a comprehensive "winter work list".

In 2024 after a sea trial and a thorough survey, we took ownership of Lille Bee in Rhodes. Before sailing her to Aegina, "Lille Bee" underwent a £20,000 refit including new instruments, anchor/chain and electronics.

As far as putting Lille Bee on the market is concerned, there appears to be many other 42 foot Moodys on the market scattered around the world. Advertised prices range from £55,000 at one end up to 127,00 euros at the other. There are even a couple in the USA at around \$110,000; none have brand new Yanmar diesels and an up to date instrument package in them though. We would always advise anyone putting in an offer to make it "subject to survey". This way, everyone knows where they stand (Our original 2024 purchase survey and an insurance survey from 2015 available.)

# Accommodation and Equipment

## Moody 422 "Lille Bee" Centre cockpit cabin layout



## **Fore peak**

1. Chain locker

## **Fore Cabin**

1. Large double V berth
2. Under berth holding tank  
(with sea and deck pump out)
3. Under berth sail lockers
4. Access to bow thruster motor
5. Hanging locker
6. Storage troughs

## **Fore cabin En-suite heads**

1. Pressurised hot and cold water system to wash basin
2. Pump out WC to holding tank
3. Pressurised H/C shower with shower tray electric pump out.
4. Access to log and depth sounder hull skin fittings



## Saloon

1. 2 single berths with lee cloths
2. Teak and holly floor boards
3. Engine room access
4. Fold down table
5. Large closeable storage lockers
6. Pilot book storage area

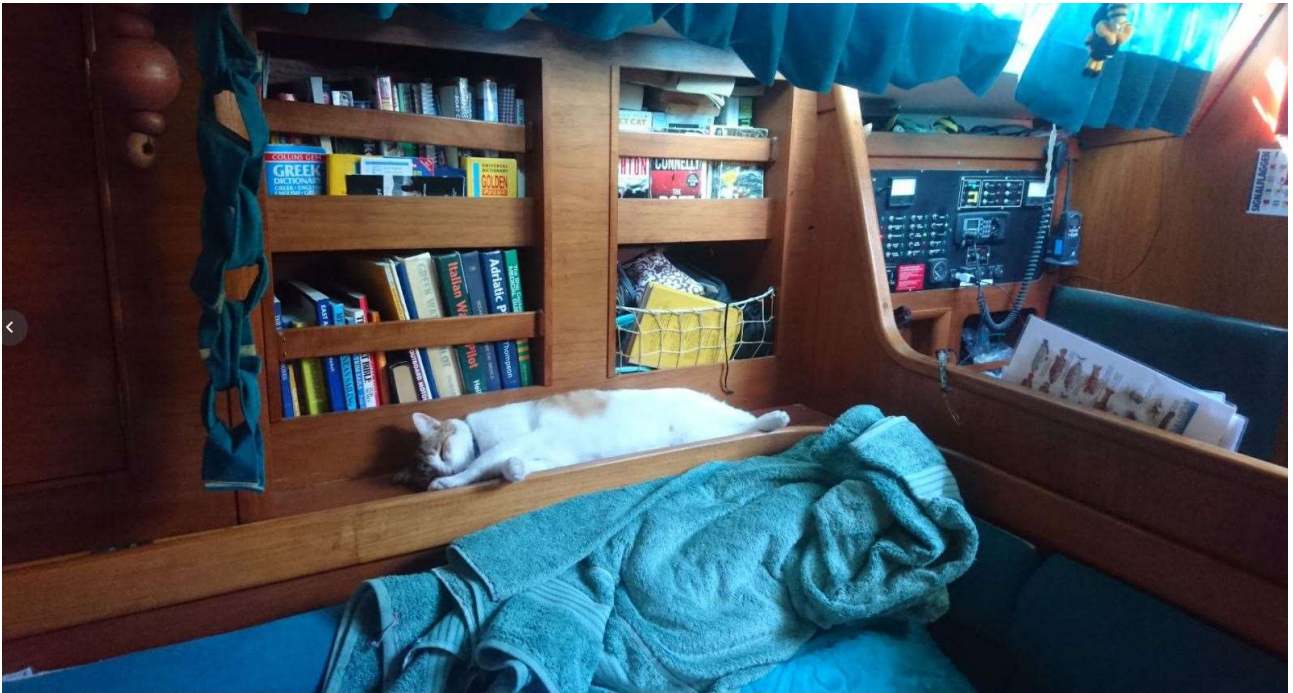
**Alcantara peacock green theme throughout the boat**



**Sleeping arrangement modelled by Smudge**

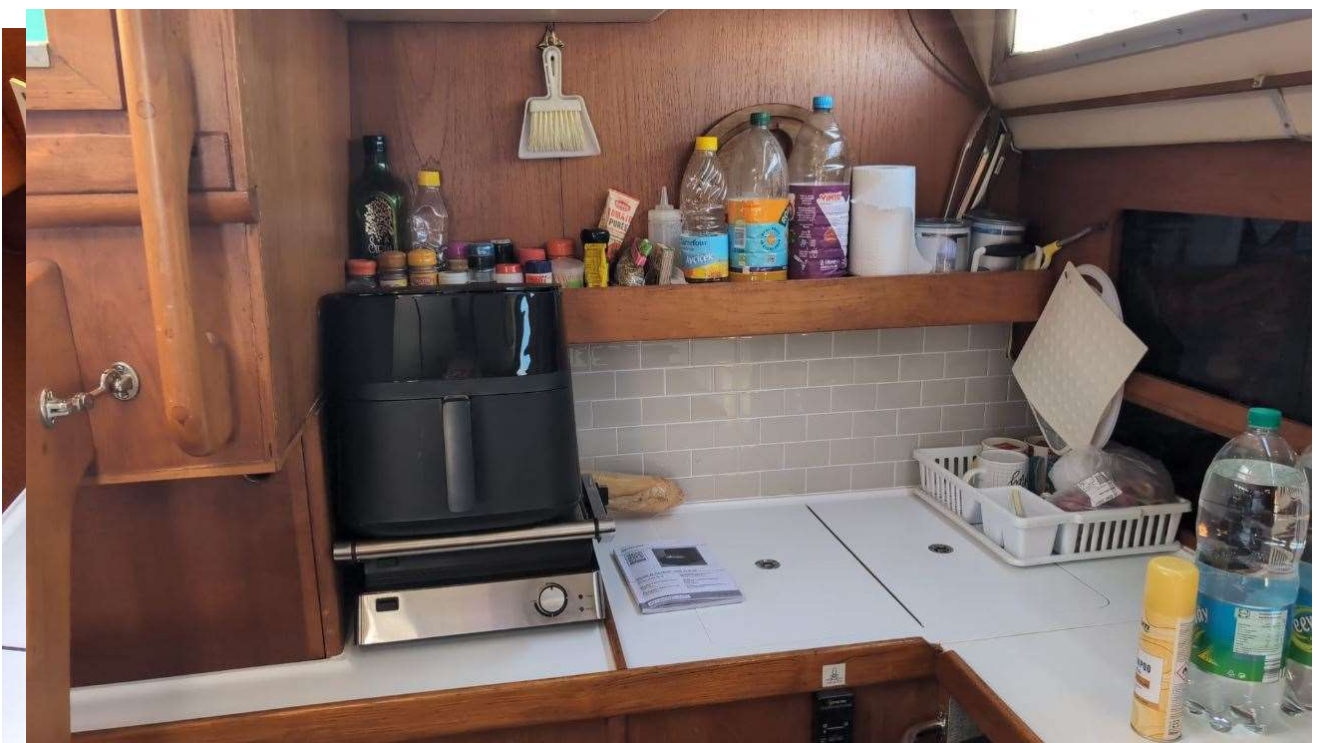


## Pilot books and library



## Galley

1. Solid composite work top (new 2022)
2. Large top loading 12 v fridge, plus coolbox
3. 2 x stainless steel sinks (new 2022)
4. Pressurised fresh water supply (hot and cold)
5. Whale foot pumps (fresh and sea water)
6. Force 10 stainless steel cooker, twin burners with oven and grill (auto ignition)
7. Air fryer
8. Electric kettle



## Navigation area (more up to date photos required)

1. Main electrical/battery isolator switch
2. Circuit breakers for lights, instruments and shore power
3. Icom command DSC VHF plus cockpit mic. new 2025
4. 2 x plastimo hand held VHF
5. Auto bilge pump controls
6. Fuel and water tank gauges
7. Large collection of pilot books plus Greece and Turkey charts
8. Lockable Safe



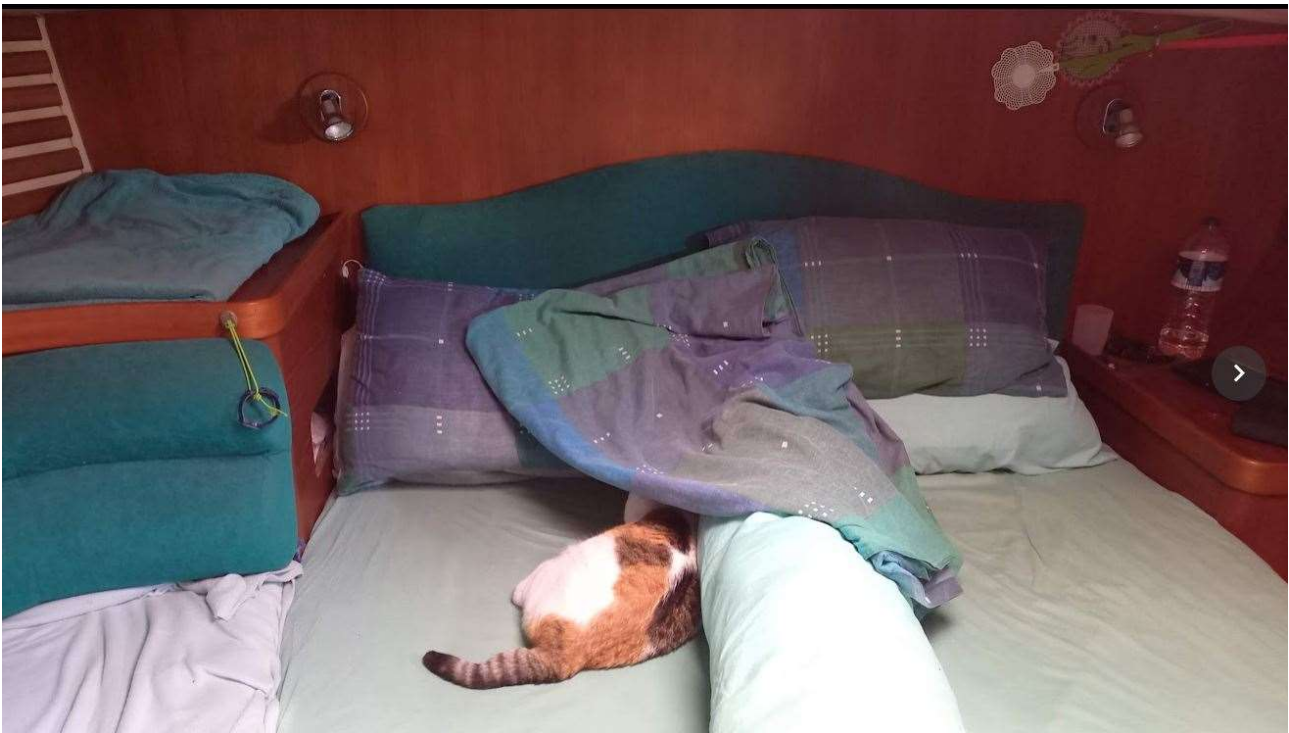
## Starboard aft passage berths and storage area

1. Fold down bunk berths with lee cloths and security netting
2. Wet locker
3. Engine room access
4. Engine spares storage locker
5. Large under bunk storage area



## Aft cabin

1. Double berth (the best in the business) with lee cloths
2. Gravity drop holding tank (and deck pump out)
3. Underberth fuel tank (with fuel cut off switch)
4. Under berth Battery compartment, Hot water tank
5. Battery monitor
6. Engine room access



## **Aft cabin en-suite heads**

1. H/C Power shower compartment
2. Wash basin
3. Toilet with sea water pump out to 100 litre holding tank with gravity drop and deck pump out facility
4. Additional port light fitted to aid ventilation





## Engine Room

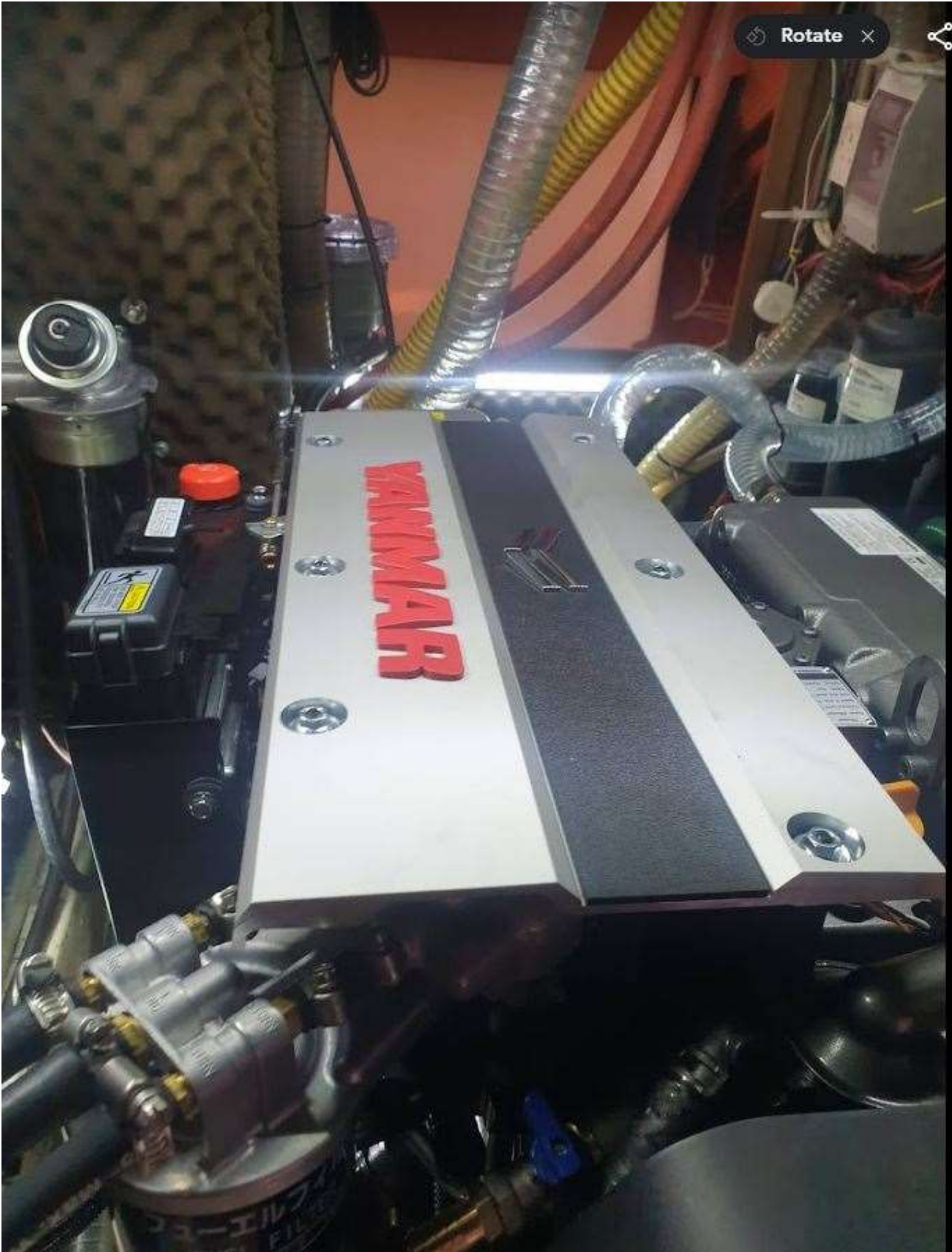
1. Three sided access (it really is an engine room)
2. Yanmar 4JH57 direct injection diesel engine with electronic management system.(New April 2023)
3. Winterised 2025-6 by Yanmar main dealer engineers.
4. Easy access fuel and oil filters and coolant
5. New shaft, bearings, 'P' bracket and 3 bladed prop (April 2023)
6. Automatic halon fire extinguisher
7. Main fresh water water pump
8. Victron Battery charger
9. Aft cabin shower sump pump



## Easy access raw water impeller



Easy access diesel priming pump



## Electrics

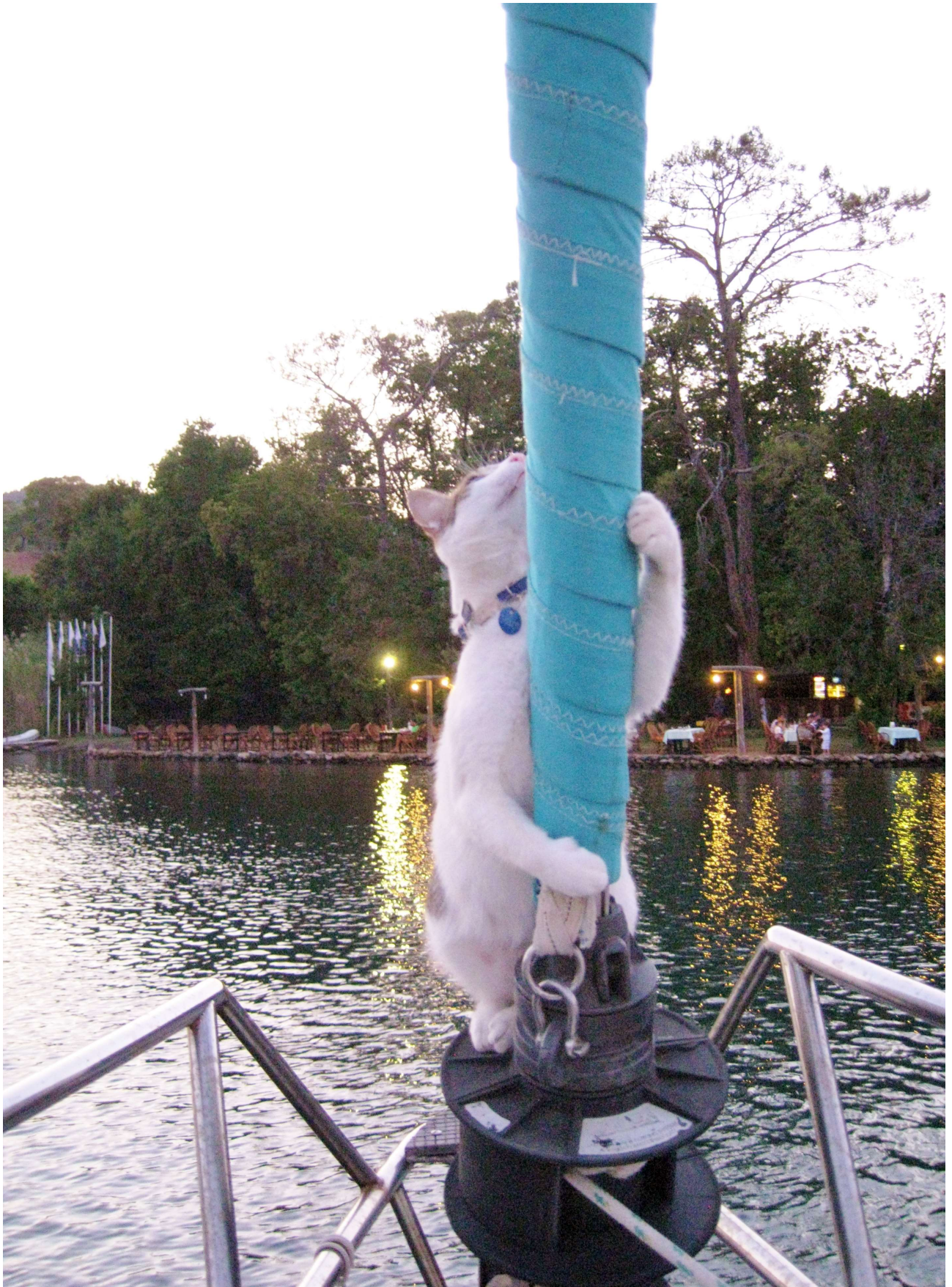
1. Cockpit shore power connection to Victron battery charger (engine room)
2. 240 volt hot water calorifier with heat exchanger circuit from main engine (under aft cabin berth).
3. 4 x 105 ah batteries (new 2022) (under aft cabin berth)
4. Delta 9 eco flow EU power bank with 400 W solar panel
5. Nasa Clipper BM2 battery monitor (aft cabin)
6. 3 x 150 watt mono crystalline solar panels (Victron energy regulator)
7. Spare long and short shore power cables.
8. 12 volt fans over every bunk, galley, saloon and chart table, plus personal USB rechargeable fans.
9. New LED strip lighting in the saloon (2024) plus reading lights in all cabins
10. Stereo speakers in saloon, aft cabin and cockpit
11. 240 volt UK sockets all cabins for use when on shore power
12. USB chargers at chart table and aft cabin (direct off batteries)
13. Lofrans Cayman electric windlass with 60 metres of 8 mm calibrated stainless chain.
14. Hull, shaft and propeller zinc anodes

### 15. Navigation lights

16. Mast head tri-colour and anchor light
17. Bow red and green
18. Mast and stern Steaming light
19. Mast deck light

## Spars and Rigging

1. Conventional bermudan rig with cutter.
2. All new stainless steel standing rigging 04/2016
3. **New running rigging planned for 2022**
4. Backstay adjuster
5. Roller furling genoa
6. Adjustable genoa and main sheet track
7. Silver anodised Kemp mast, boom and Spinnaker pole
8. Cockpit winches
  1. 2 x Lewmar ST 52 Genoa sheet winches
  2. 2 x Lewmar genoa furling line winches
  3. 2 x Spinnaker winches
  4. 2 x double handed sheet winch handles
9. Mast mounted winches
  1. Lewmar main sail halyard winch.
  2. Genoa halyard winch
  3. Lewmar Spinnaker and crusing chute halyard winch
  4. Lewmar ST reefing winch.





## Sails

1. Fully battened main sail on Frederikson ball slides with full boom length zip-up storage lazy bag. Beautiful shape at all wind speeds
2. 150% furling genoa on Furlex roller system (powerful)
3. Spinnaker and Cruising chute (with snuffer)
4. Cutter with Storm jib
5. Lewmar 52 Self tailing genoa winches and halyard winches (serviced annually)





**We call this one "Joseph"**





## Hull

1. Cast iron shallow draft (1.5. metres) Scheel keel (ideal for all those little Greek harbours)
2. Cast iron keel stripped and epoxy repainted 2017.
3. Skeg mounted spade rudder
4. Conventional shaft via Volvo stern seal (with rope cutter) through a 'P' bracket to 3 bladed bronze propeller (new 2023)
5. Teak and stainless steel rubbing strake (great hull protection in tight harbours)
6. Hull, shaft and propeller zinc anodes



**That is some deep shine**



Scheel keel and old prop showing "stripper" rope cutter, shaft and hull anodes



**The new 3 bladed prop (April 2023). Old bronze skin fittings and sea cocks replaced with modern composite ones (too many of the so called bronze skin fittings have too much brass in them, making them brittle)**



## Deck equipment

1. Stainless steel stern A frame/roll bar with 3 x solar panels
2. Twin lazarette lockers
3. Gas locker for 2 x bottles
4. Teak safety hand rails
5. 10 x fenders (and socks)
6. Bow, stern and mid line fairleads and cleats
7. Spare 50 metre heavy warp
8. Selection of mooring warps
9. Ultra 27 kg stainless steel anchor and 60 metres of 8 mm stainless steel chain, with ultra flip swivel (new 2024)
10. Dinghy 2.6 metre AVON RIB 05/2012 (with full cover 2024)
11. Outboard Yamaha F4 (annual service)
12. Zodiac 6 man life raft (new 2024)
13. Spray hood with zip up front window
14. 2 x boom mounted sun awnings
15. Aft deck sun awning
16. Full all over winter boat cover (new 2024)



**Underside of boom showing rolled up sun awnings**



## Aft Deck (continued)

1. Large aft deck recessed sun bed area (with towelling mattress)
2. Large selection of cockpit cushions
3. Sprayhood
4. Large and small cockpit sun awning and Aft deck sun awning
5. Granny bars with storage bags
6. Transom step with shower (H/C) and boarding ladder



## Cockpit

1. Raymarine Evolution autopilot controls (new 2025)
2. Raymarine i 50 and i60 speed, wind & depth instruments (2025)
3. Raymarine Axiom 2 Pro 9" chart plotter with real vision Raymarine i50 speed, depth and wind.
4. Raymarine Evolution autopilot (P70 controls at helm) with Roccc midi fail mount
5. Raymarine Quantum radar (2025)
6. Navionics chart plotter with SD card Black Sea and Med charts
7. Scanstrut helm pod
8. Sleipner Bow thruster controls
9. Yanmar Yanmar C35 Engine instruments (RPM, oil pressure and temperature)
10. Tek deck Seating and cockpit sole (2017)
11. Whitlock Stainless steel steering system and Morse engine controls
12. Plastimo Binnacle compass
13. VHF Remote microphone
14. 2 x cockpit speakers for loud music
15. 240 Volt shore power connection socket
16. Teak cockpit table with cover and cup holders
17. **Transom**
18. Transom mounted folding passarelle (new 2025)
19. Deck shower (Hot and cold)
20. Boarding ladder



**New Raymarine instruments 2025, New composite cockpit seats and sole 2018**



## Safety Equipment

1. AIS 700 transceiver
2. Zodiac 6 man liferaft (transom fitted cannister) New 2024
3. 4 x life jackets
  
4. Fire extinguishers all cabins Serviced 2023
5. Auto engine room halon extinguisher New 2021
6. Fire blanket (galley area)
  
7. Seacocks and skin fittings Replaced 2016-2018
  
8. Lee cloths/safety netting to all berths
  
9. Spare Danforth anchor
10. Bolt croppers
11. Mast Radar reflector
12. Automatic bilge pump (with float switch alarm)
13. Manual bilge pump
14. Emergency steering tiller
  
15. **Others**
  
16. Comprehensive tool kit
17. Socket set (Imperial and metric)
18. Spanner set
19. Windscoops, mosquito nets and sun blinds for the main hatches
20. Fresh water hose reel

## Wind scoops

Moodies were never designed for hot weather climates, so we had an extra window put in, aft on the port side to increase the throughput of air into the aft en-suite heads. Small 12 volt fans at the chart table, in each cabin have been a god send. Since then, wind scoops have been essential; the yellow one is brilliant at anchor, always forcing air into the boat.



## Top sides GRP thickness

Just to show the thickness of the top sides, this was the section we cut out for the extra window into the aft heads, The rest of the hull is built like a tank; on the modern boats you can see the sunrise through the hull...(that worries me, hence we call Beneteaus, Jeanneaus and Bavarias "recycled yoghurt pots".

